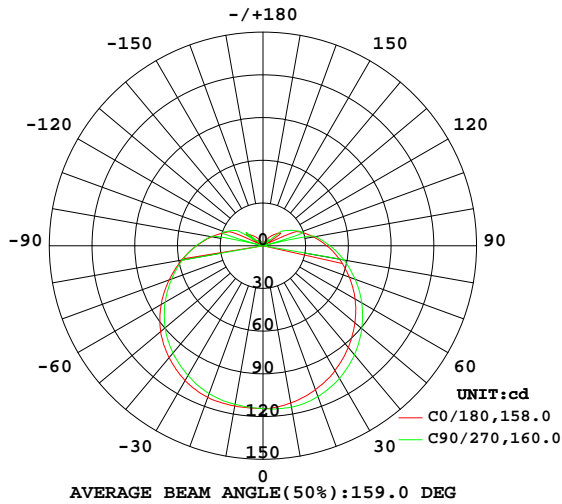


LUMINAIRE PHOTOMETRIC TEST REPORT

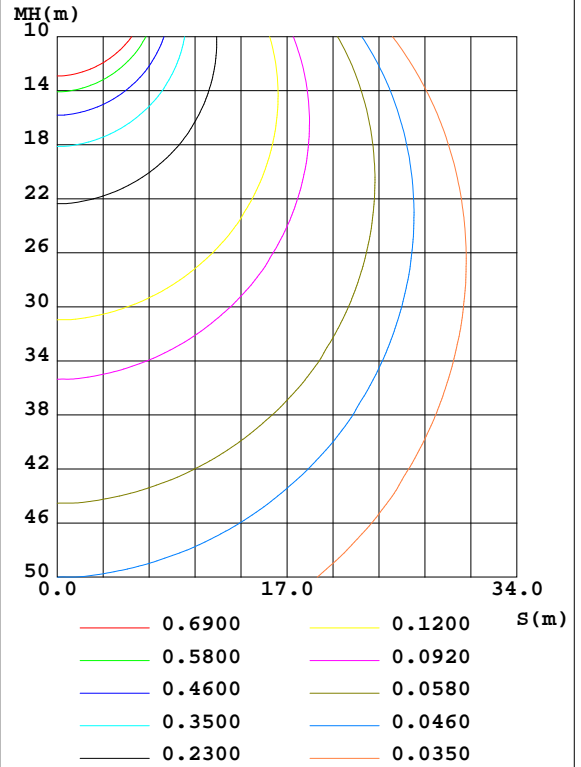
Test:U:0V I:0A P:0W PF:0.0000 Freq:0Hz Lamp Flux:618.278x1 lm		
NAME: NYX Bulb	TYPE:LED	WEIGHT:N/A
SPEC.:N/A	DIM.:	SERIAL No.:N/A
MFR.: Astera LED Technology GmbH	SUR.:	Shielding Angle:N/A

DATA OF LAMP		PHOTOMETRIC DATA			
MODEL	3200K without Diffuser	I _{max} (cd)	116.2	S/MH(C0/180)	1.43
NOMINAL POWER(W)	10	LOR(%)	100.0	S/MH(C90/270)	1.38
RATED VOLTAGE(V)	90-264	TOTAL FLUX(lm)	618.28	η UP,DN(C0-180)	9.5,40.6
NOMINAL FLUX(lm)	618.278	CIE CLASS	SEMI-D.	η UP,DN(C180-360)	9.4,40.6
LAMPS INSIDE	1	η up(%)	18.8	CIBSE SHR NOM	1.50
TEST VOLTAGE(V)		η down(%)	81.2	CIBSE SHR MAX	1.55

LUMINOUS INTENSITY DISTRIBUTION DIAGRAM



C0 PLANE ISOLUX DIAGRAM (UNIT:lx)



C Range: 0 - 360DEG
 C Interval: 22.5DEG
 Test Speed: HIGH
 Temperature:24.5DEG
 Operators:William
 Test Date:2020-04-27

γ Range: 0 - 180DEG
 γ Interval: 1.0DEG
 Test System:EVERFINE GO-R5000_V2 SYSTEM V2.0.366
 Humidity:56.4%
 Test Distance:26.000m [K=1.3952]
 Remarks:

ZONAL FLUX DIAGRAM

ZONAL FLUX DIAGRAM:

γ	C0	C45	C90	C135	C180	C225	C270	C315	γ	Φ zone	Φ total	%lum, lamp
10	112.1	113.1	115.1	115.6	114.3	114.1	113.1	111.8	0- 10	10.89	10.89	1.76,1.76
20	107.6	109.2	112.6	115.2	113.3	112.7	110.5	108.1	10- 20	31.91	42.80	6.92,6.92
30	101.3	103.3	107.5	110.6	109.3	108.2	105.3	101.9	20- 30	50.29	93.09	15.1,15.1
40	93.20	95.68	99.95	103.5	102.6	101.7	98.36	94.49	30- 40	64.33	157.4	25.5,25.5
50	84.25	86.58	90.54	93.77	93.82	93.24	89.76	85.73	40- 50	73.03	230.4	37.3,37.3
60	74.67	76.78	80.11	82.63	82.59	82.41	79.33	75.71	50- 60	75.84	306.3	49.5,49.5
70	64.46	66.34	68.82	70.71	70.14	70.50	68.27	65.17	60- 70	73.14	379.4	61.4,61.4
80	54.55	56.03	57.73	58.60	57.97	58.79	57.46	55.03	70- 80	66.12	445.6	72.1,72.1
90	44.82	45.87	46.98	47.28	46.70	47.45	46.88	45.14	80- 90	56.44	502.0	81.2,81.2
100	36.00	36.82	37.33	37.32	36.64	37.59	37.25	36.17	90-100	45.42	547.4	88.5,88.5
110	28.16	4.717	28.89	2.478	27.85	1.490	28.72	5.386	100-110	29.14	576.6	93.3,93.3
120	0.2181	21.58	21.79	21.46	0.3939	21.27	21.33	21.06	110-120	17.37	593.9	96.1,96.1
130	13.64	15.47	3.005	15.43	12.02	15.37	2.185	15.26	120-130	13.88	607.8	98.3,98.3
140	9.022	9.948	5.190	9.800	8.283	9.845	4.368	9.483	130-140	7.052	614.9	99.4,99.4
150	4.103	3.842	2.963	3.725	4.764	2.932	3.632	3.842	140-150	2.373	617.2	99.8,99.8
160	1.980	0	0.6053	0	2.346	0.0727	1.171	0	150-160	0.9703	618.2	100,100
170	0.1466	0	0	0	0.4390	0	0	0	160-170	0.0769	618.3	100,100
180	0	0	0	0	0	0	0	0	170-180	0.0033	618.3	100,100
DEG	LUMINOUS INTENSITY:cd									UNIT:lm		

Conical surface Flux(90deg): 193.2 lm

%lum = 31.2%

%lamp = 31.2%

Conical surface Flux(120deg): 306.29 lm

%lum = 49.5%

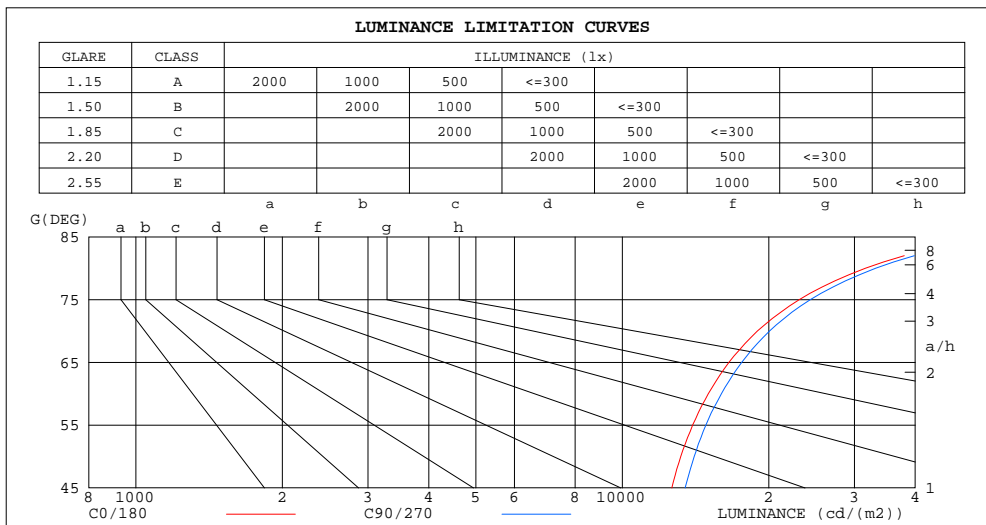
%lamp = 49.5%

C Range: 0 - 360DEG
C Interval: 22.5DEG
Test Speed: HIGH
Temperature:24.5DEG
Operators:William
Test Date:2020-04-27

γ Range: 0 - 180DEG
 γ Interval: 1.0DEG
Test System:EVERFINE GO-R5000_V2 SYSTEM V2.0.366
Humidity:56.4%
Test Distance:26.000m [K=1.3952]
Remarks:

LUMINANCE LIMITATION CURVES

Test:U:0V I:0A P:0W PF:0.0000 Freq:0Hz Lamp Flux:618.278x1 lm		
NAME: NYX Bulb	TYPE:LED	WEIGHT:N/A
SPEC.:N/A	DIM.:	SERIAL No.:N/A
MFR.: Astera LED Technology GmbH	SUR.:	Shielding Angle:N/A



LUMINANCE cd/(m2)		
G(DEG)	C0/180	C90/270
85	57316	59881
80	31609	33176
75	23124	24367
70	18963	20078
65	16567	17602
60	15026	15987
55	13946	14850
50	13189	14055
45	12635	13464

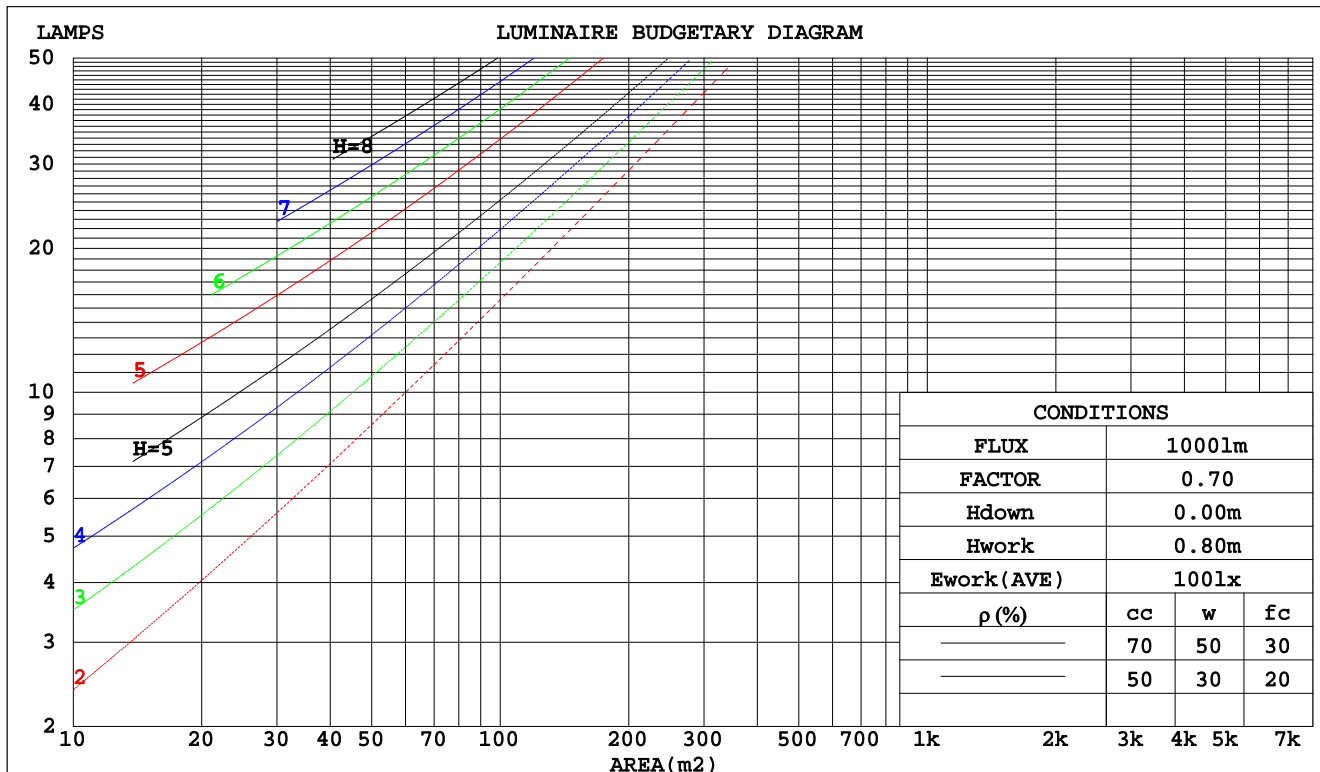
C Range: 0 - 360DEG
 C Interval: 22.5DEG
 Test Speed: HIGH
 Temperature:24.5DEG
 Operators:William
 Test Date:2020-04-27

γ Range: 0 - 180DEG
 γ Interval: 1.0DEG
 Test System:EVERFINE GO-R5000_V2 SYSTEM V2.0.366
 Humidity:56.4%
 Test Distance:26.000m [K=1.3952]
 Remarks:

CU AND LUMINAIRE BUDGETARY ESTIMATE DIAGRAM

Test:U:0V I:0A P:0W PF:0.0000 Freq:0Hz Lamp Flux:618.278x1 lm		
NAME: Argos Bulb	TYPE:LED	WEIGHT:N/A
SPEC.:N/A	DIM.:	SERIAL No.:N/A
MFR.: Astera LED Technology GmbH	SUR.:	Shielding Angle:N/A

pcc	80%			70%			50%			30%			10%			0
pw	50%	30%	10%	50%	30%	10%	50%	30%	10%	50%	30%	10%	50%	30%	10%	0
pfc	20%			20%			20%			20%			20%			0
RCR	Coefficients of Utilization(CU)															
0.0	1.15	1.15	1.15	1.10	1.10	1.10	1.01	1.01	1.01	.92	.92	.92	.85	.85	.85	.81
1.0	.94	.88	.83	.90	.85	.80	.82	.78	.74	.75	.72	.68	.68	.66	.63	.60
2.0	.80	.72	.65	.76	.69	.62	.70	.63	.58	.63	.58	.54	.58	.54	.50	.47
3.0	.69	.60	.52	.66	.57	.50	.60	.53	.47	.55	.49	.44	.50	.45	.41	.38
4.0	.60	.51	.43	.58	.49	.42	.53	.45	.39	.48	.42	.37	.44	.38	.34	.31
5.0	.53	.44	.36	.51	.42	.35	.47	.39	.33	.43	.36	.31	.39	.34	.29	.26
6.0	.48	.38	.31	.46	.37	.30	.42	.34	.29	.38	.32	.27	.35	.30	.25	.23
7.0	.43	.34	.27	.41	.33	.26	.38	.30	.25	.35	.28	.24	.32	.26	.22	.20
8.0	.39	.30	.24	.37	.29	.23	.35	.27	.22	.32	.25	.21	.29	.24	.20	.17
9.0	.36	.27	.21	.34	.26	.21	.32	.25	.20	.29	.23	.19	.27	.22	.18	.15
10.0	.33	.25	.19	.31	.24	.19	.29	.22	.18	.27	.21	.17	.25	.20	.16	.14



C Range: 0 - 360DEG
 C Interval: 22.5DEG
 Test Speed: HIGH
 Temperature: 24.5DEG
 Operators: William
 Test Date: 2020-04-27

γ Range: 0 - 180DEG
 γ Interval: 1.0DEG
 Test System: EVERFINE GO-R5000_V2 SYSTEM V2.0.366
 Humidity: 56.4%
 Test Distance: 26.000m [K=1.3952]
 Remarks:

WEC AND CCEC

Test:U:0V I:0A P:0W PF:0.0000 Freq:0Hz Lamp Flux:618.278x1 lm									
NAME: NYX Bulb				TYPE:LED			WEIGHT:N/A		
SPEC.:N/A				DIM.:			SERIAL No.:N/A		
MFR.: Astera LED Technology GmbH				SUR.:			Shielding Angle:N/A		

pcc	80%			70%			50%			30%			10%			0	
pw	50%	30%	10%	50%	30%	10%	50%	30%	10%	50%	30%	10%	50%	30%	10%	0	
pfc	20%			20%			20%			20%			20%			0	
RCR	RCR:Room Cavity Ratio						Wall Exitance Coefficients(WEC)										
0.0																	
1.0	.411	.234	.074	.398	.227	.072	.373	.214	.068	.351	.202	.065	.330	.191	.062		
2.0	.349	.191	.059	.338	.186	.057	.315	.175	.054	.295	.166	.052	.276	.156	.049		
3.0	.307	.164	.049	.297	.159	.048	.277	.150	.046	.258	.141	.043	.241	.133	.041		
4.0	.275	.143	.042	.265	.139	.041	.247	.131	.039	.230	.124	.037	.215	.117	.036		
5.0	.249	.127	.037	.240	.123	.036	.223	.116	.034	.208	.110	.033	.194	.104	.031		
6.0	.227	.114	.033	.219	.111	.032	.204	.105	.030	.190	.099	.029	.177	.093	.028		
7.0	.209	.103	.029	.202	.100	.029	.188	.095	.027	.175	.090	.026	.163	.085	.025		
8.0	.193	.094	.027	.187	.092	.026	.174	.087	.025	.162	.082	.024	.151	.077	.023		
9.0	.180	.087	.024	.174	.085	.024	.162	.080	.023	.151	.076	.022	.141	.071	.021		
10.0	.168	.080	.022	.162	.078	.022	.152	.074	.021	.141	.070	.020	.132	.066	.019		

pcc	80%			70%			50%			30%			10%			0
pw	50%	30%	10%	50%	30%	10%	50%	30%	10%	50%	30%	10%	50%	30%	10%	0
pfc	20%			20%			20%			20%			20%			0
RCR	RCR:Room Cavity Ratio						Ceiling Cavity Exitance Coefficients(CCEC)									
0.0	.334	.334	.334	.285	.285	.285	.195	.195	.195	.112	.112	.112	.036	.036	.036	
1.0	.332	.300	.271	.284	.257	.233	.194	.177	.161	.112	.102	.094	.036	.033	.030	
2.0	.325	.277	.236	.279	.239	.204	.191	.165	.143	.110	.096	.084	.035	.031	.027	
3.0	.318	.261	.215	.273	.225	.187	.187	.156	.131	.108	.091	.077	.035	.030	.025	
4.0	.310	.248	.201	.266	.215	.175	.183	.150	.123	.106	.088	.073	.034	.029	.024	
5.0	.302	.239	.192	.260	.207	.167	.179	.144	.118	.104	.085	.070	.033	.028	.023	
6.0	.295	.231	.185	.253	.200	.161	.175	.140	.114	.101	.082	.068	.033	.027	.022	
7.0	.287	.224	.180	.247	.194	.157	.171	.136	.111	.099	.080	.066	.032	.026	.022	
8.0	.281	.219	.176	.241	.190	.154	.167	.133	.109	.097	.079	.065	.031	.026	.022	
9.0	.274	.214	.173	.236	.186	.151	.164	.131	.107	.095	.077	.064	.031	.025	.021	
10.0	.268	.210	.171	.231	.182	.149	.160	.128	.106	.094	.076	.063	.030	.025	.021	

C Range: 0 - 360DEG
 C Interval: 22.5DEG
 Test Speed: HIGH
 Temperature:24.5DEG
 Operators:William
 Test Date:2020-04-27

γ Range: 0 - 180DEG
 γ Interval: 1.0DEG
 Test System:EVERFINE GO-R5000_V2 SYSTEM V2.0.366
 Humidity:56.4%
 Test Distance:26.000m [K=1.3952]
 Remarks:

UGR(Unified Glare Rating) Table

Test:U:0V I:0A P:0W PF:0.0000 Freq:0Hz Lamp Flux:618.278x1 lm										
NAME: NYX Bulb					TYPE:LED			WEIGHT:N/A		
SPEC.:N/A					DIM.:			SERIAL No.:N/A		
MFR.: Astera LED Technology GmbH					SUR.:			Shielding Angle:N/A		
ceiling/cavity	0.7	0.7	0.5	0.5	0.3	0.7	0.7	0.5	0.5	0.3
walls	0.5	0.3	0.5	0.3	0.3	0.5	0.3	0.5	0.3	0.3
working plane	0.2	0.2	0.2	0.2	0.2	0.2	0.2	0.2	0.2	0.2
Room dimensions	Viewed crosswise					Viewed endwise				
x = 2H y = 2H	20.8	22.2	21.3	22.7	23.3	21.0	22.5	21.6	23.0	23.6
3H	23.3	24.6	23.9	25.2	25.8	23.6	24.9	24.2	25.5	26.1
4H	24.7	26.0	25.3	26.5	27.2	25.0	26.3	25.6	26.8	27.5
6H	26.3	27.4	26.9	28.0	28.7	26.6	27.7	27.2	28.3	29.0
8H	27.1	28.3	27.7	28.9	29.6	27.4	28.6	28.0	29.2	29.8
12H	28.1	29.2	28.7	29.8	30.5	28.4	29.5	29.0	30.1	30.8
4H 2H	21.7	22.9	22.2	23.5	24.1	21.8	23.1	22.4	23.7	24.3
3H	24.4	25.5	25.0	26.1	26.8	24.6	25.7	25.2	26.3	27.0
4H	26.0	27.0	26.6	27.6	28.3	26.2	27.2	26.8	27.8	28.5
6H	27.7	28.6	28.3	29.2	30.0	27.9	28.8	28.6	29.5	30.2
8H	28.6	29.5	29.3	30.2	30.9	28.9	29.7	29.6	30.4	31.2
12H	29.7	30.5	30.4	31.2	32.0	30.0	30.8	30.7	31.5	32.3
8H 4H	26.6	27.4	27.3	28.1	28.9	26.8	27.6	27.4	28.3	29.1
6H	28.6	29.3	29.3	30.0	30.8	28.8	29.5	29.5	30.2	31.0
8H	29.7	30.4	30.4	31.1	31.9	29.9	30.6	30.7	31.3	32.1
12H	31.1	31.6	31.8	32.4	33.2	31.3	31.8	32.0	32.6	33.4
12H 4H	26.7	27.5	27.4	28.2	29.0	26.9	27.7	27.6	28.4	29.2
6H	28.9	29.5	29.6	30.2	31.1	29.0	29.7	29.8	30.4	31.2
8H	30.1	30.7	30.9	31.4	32.3	30.3	30.9	31.0	31.6	32.5
Variations with the observer position at spacings:										
S = 1.0H	+ 0.1 / - 0.1					+ 0.1 / - 0.1				
1.5H	+ 0.2 / - 0.3					+ 0.2 / - 0.3				
2.0H	+ 0.3 / - 0.4					+ 0.2 / - 0.4				

CIE Pub.117, 618.3 lm Total Lamp Luminous Flux Corrected ($8\log(F/F_0) = -1.7$)

C Range: 0 - 360DEG
C Interval: 22.5DEG
Test Speed: HIGH
Temperature:24.5DEG
Operators:William
Test Date:2020-04-27

γ Range: 0 - 180DEG
 γ Interval: 1.0DEG
Test System:EVERFINE GO-R5000_V2 SYSTEM V2.0.366
Humidity:56.4%
Test Distance:26.000m [K=1.3952]
Remarks:

UTILIZATION FACTORS TABLE

Test:U:0V I:0A P:0W PF:0.0000 Freq:0Hz Lamp Flux:618.278x1 lm		
NAME: NYX Bulb	TYPE:LED	WEIGHT:N/A
SPEC.:N/A	DIM.:	SERIAL No.:N/A
MFR.: Astera LED Technology GmbH	SUR.:	Shielding Angle:N/A

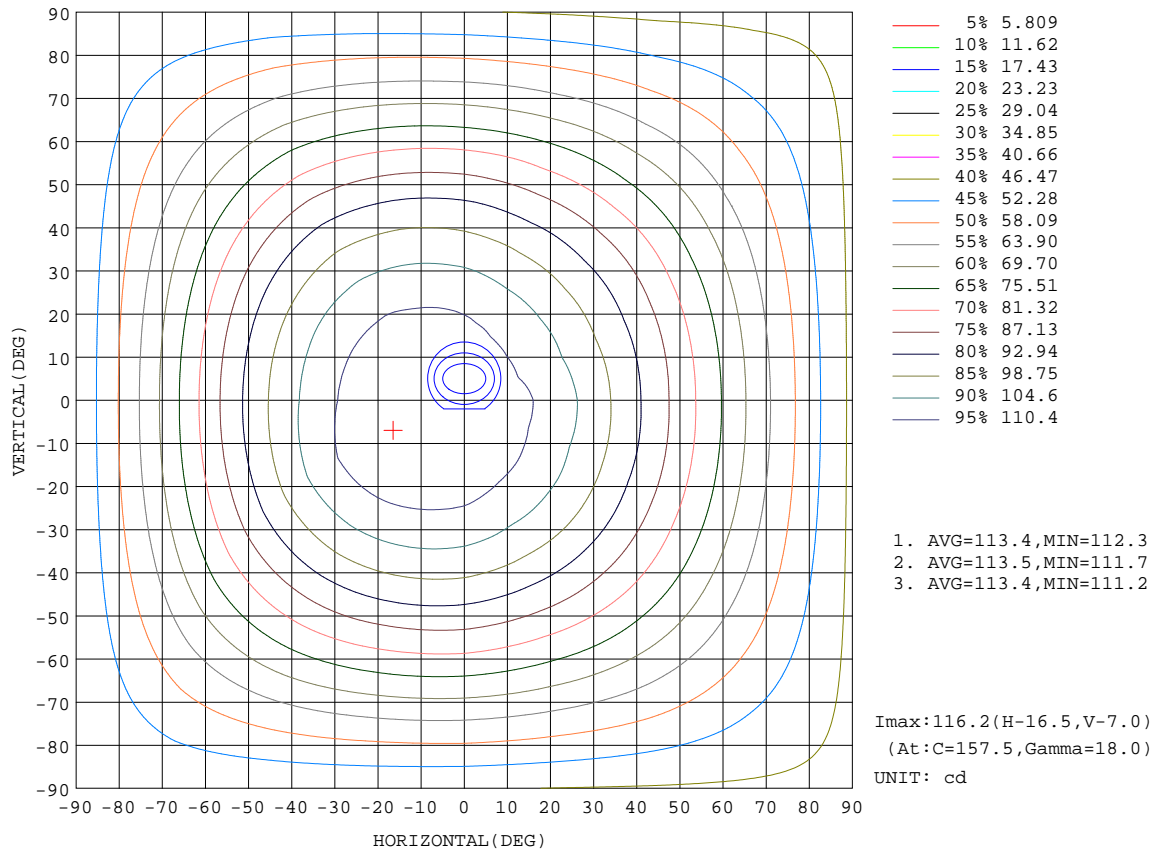
REFLECTANCE										
Ceiling	0.8	0.8	0.8	0.7	0.7	0.7	0.5	0.5	0.5	0
Walls	0.7	0.5	0.3	0.7	0.5	0.3	0.7	0.5	0.3	0
Working plane	0.2	0.2	0.2	0.2	0.2	0.2	0.2	0.2	0.2	0
ROOM INDEX	UTILIZATION FACTORS(PERCENT) $k(RI) \times RCR = 5$									
k = 0.60	46	33	26	45	33	26	43	32	25	18
0.80	55	41	33	53	41	33	50	39	32	24
1.00	62	49	40	61	48	40	57	49	39	30
1.25	69	56	47	67	55	46	63	52	45	35
1.50	74	62	53	72	60	52	67	57	50	39
2.00	82	70	61	79	68	60	73	64	57	45
2.50	87	76	67	83	73	65	77	69	62	49
3.00	90	80	72	87	78	70	80	73	67	53
4.00	95	87	80	91	84	77	84	78	72	58
5.00	98	91	84	94	88	82	87	81	76	61
ROOM INDEX	UF(total)									Direct
According to DIN EN 13032-2 2004			Suspended					SHRNOM = 1.25		

C Range: 0 - 360DEG
 C Interval: 22.5DEG
 Test Speed: HIGH
 Temperature:24.5DEG
 Operators:William
 Test Date:2020-04-27

γ Range: 0 - 180DEG
 γ Interval: 1.0DEG
 Test System:EVERFINE GO-R5000_V2 SYSTEM V2.0.366
 Humidity:56.4%
 Test Distance:26.000m [K=1.3952]
 Remarks:

ISOCANDELA DIAGRAM

Test:U:0V I:0A P:0W PF:0.0000 Freq:0Hz Lamp Flux:618.278x1 lm		
NAME: NYX Bulb	TYPE:LED	WEIGHT:N/A
SPEC.:N/A	DIM.:	SERIAL No.:N/A
MFR.: Astera LED Technology GmbH	SUR.:	Shielding Angle:N/A

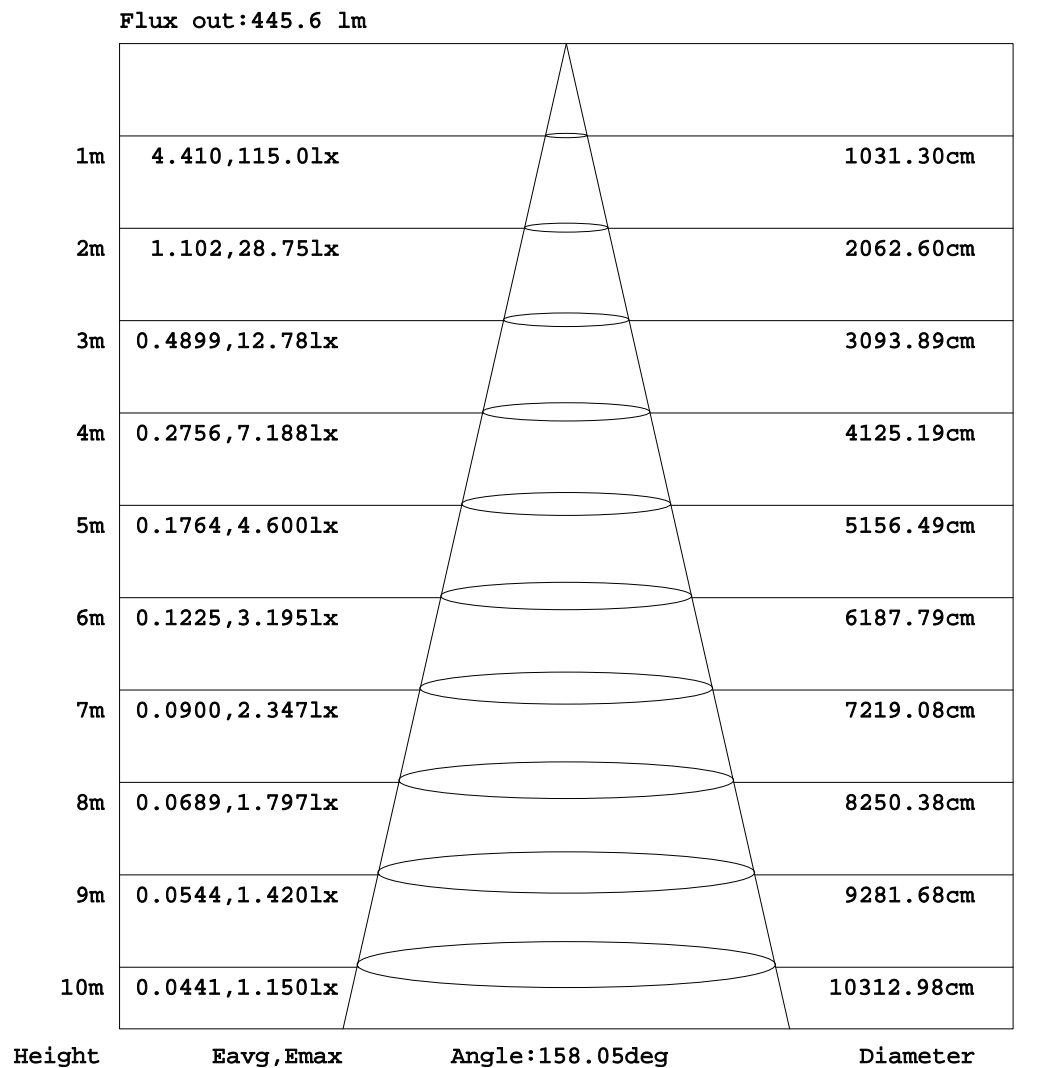


C Range: 0 - 360DEG
 C Interval: 22.5DEG
 Test Speed: HIGH
 Temperature:24.5DEG
 Operators:William
 Test Date:2020-04-27

γ Range: 0 - 180DEG
 γ Interval: 1.0DEG
 Test System:EVERFINE GO-R5000_V2 SYSTEM V2.0.366
 Humidity:56.4%
 Test Distance:26.000m [K=1.3952]
 Remarks:

AAI Figure

Test:U:0V I:0A P:0W PF:0.0000 Freq:0Hz Lamp Flux:618.278x1 lm		
NAME: NYX Bulb	TYPE:LED	WEIGHT:N/A
SPEC.:N/A	DIM.:	SERIAL No.:N/A
MFR.: Astera LED Technology GmbH	SUR.:	Shielding Angle:N/A



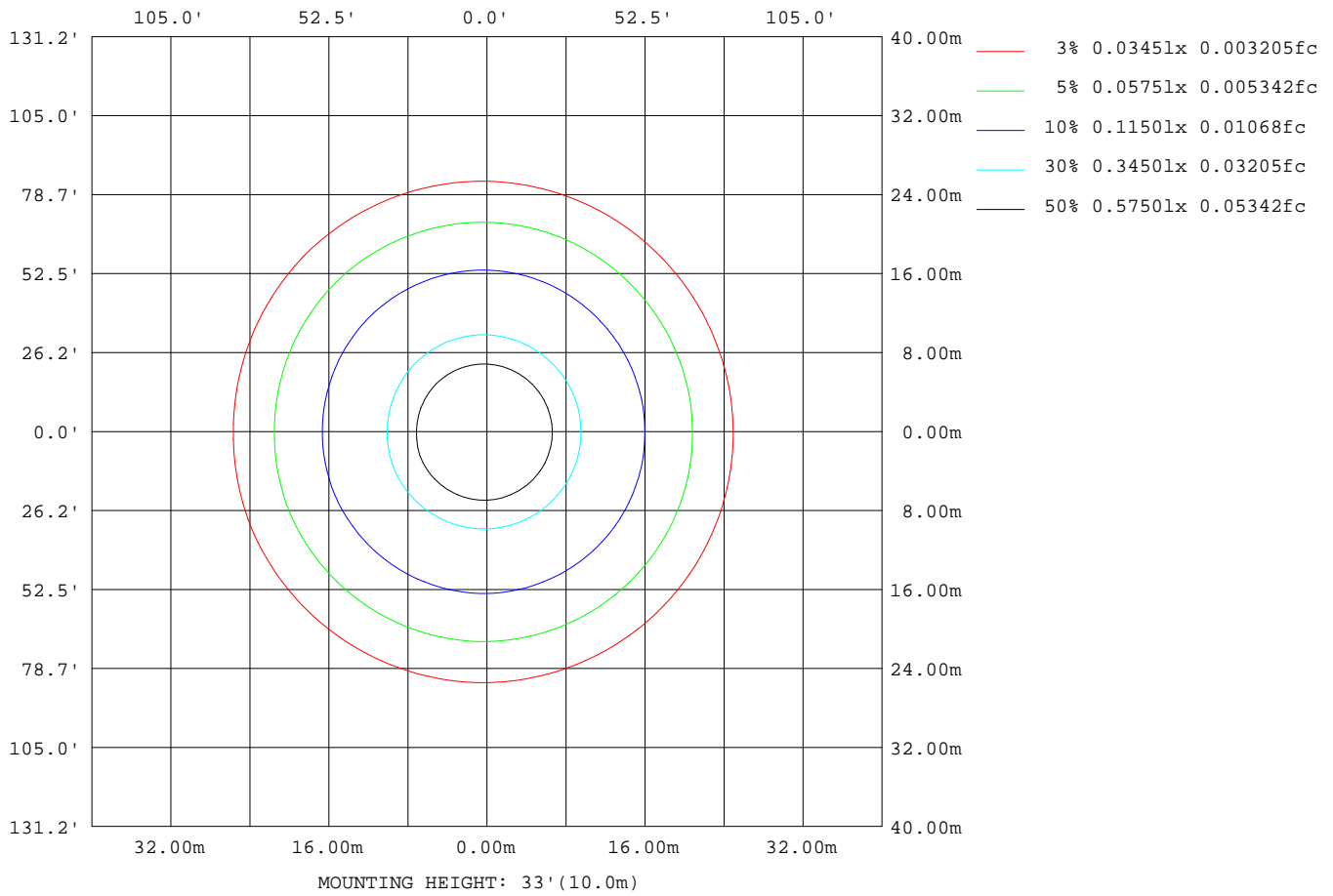
Note:The Curves indicate the illuminated area and the average illumination when the luminaire is at different distance.

C Range: 0 - 360DEG
 C Interval: 22.5DEG
 Test Speed: HIGH
 Temperature:24.5DEG
 Operators:William
 Test Date:2020-04-27

γ Range: 0 - 180DEG
 γ Interval: 1.0DEG
 Test System:EVERFINE GO-R5000_V2 SYSTEM V2.0.366
 Humidity:56.4%
 Test Distance:26.000m [K=1.3952]
 Remarks:

ISOLUX DIAGRAM

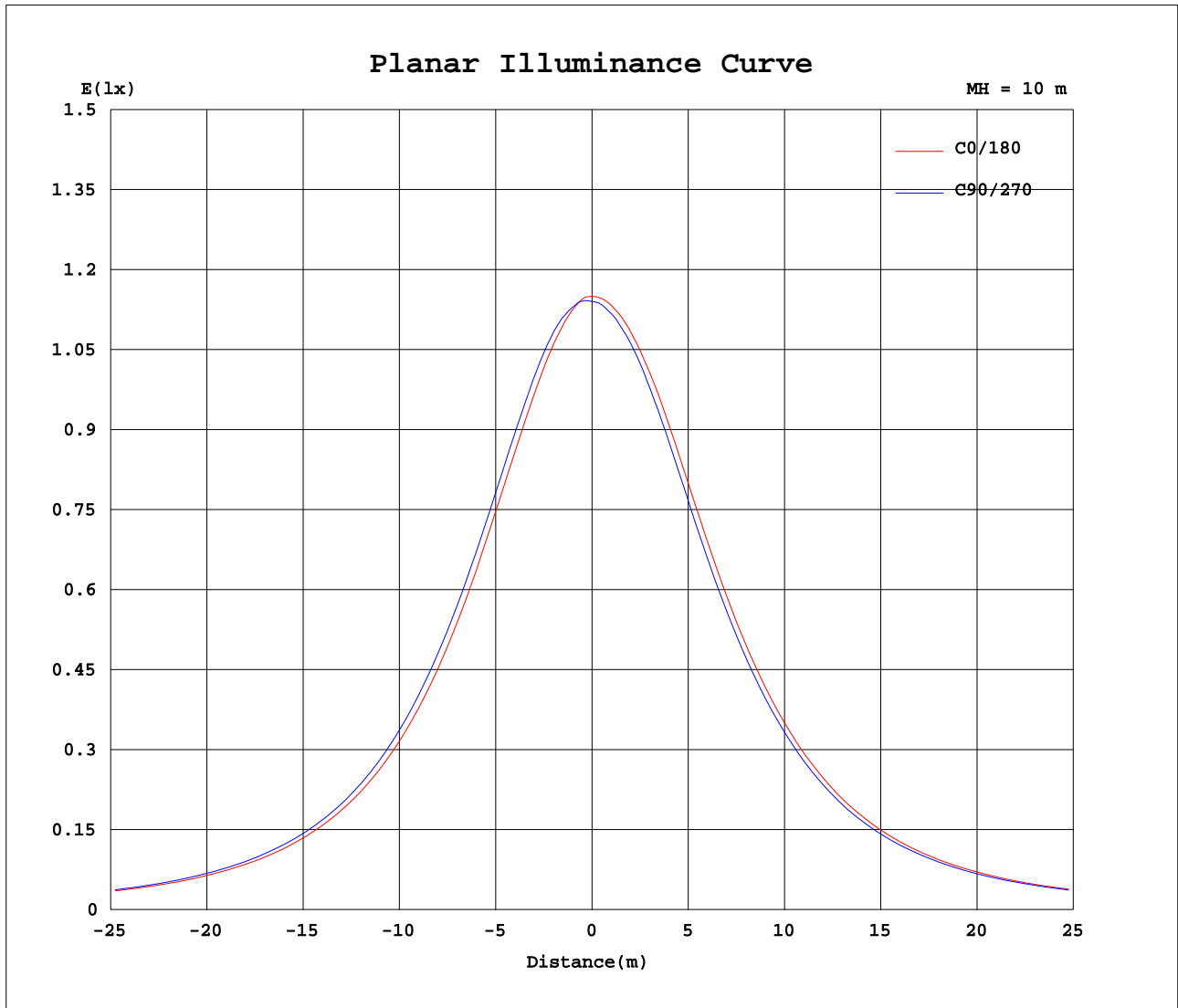
Test:U:0V I:0A P:0W PF:0.0000 Freq:0Hz Lamp Flux:618.278x1 lm		
NAME: NYX Bulb	TYPE:LED	WEIGHT:N/A
SPEC.:N/A	DIM.:	SERIAL No.:N/A
MFR.: Astera LED Technology GmbH	SUR.:	Shielding Angle:N/A



C Range: 0 - 360DEG
 C Interval: 22.5DEG
 Test Speed: HIGH
 Temperature: 24.5DEG
 Operators: William
 Test Date: 2020-04-27

γ Range: 0 - 180DEG
 γ Interval: 1.0DEG
 Test System: EVERFINE GO-R5000_V2 SYSTEM V2.0.366
 Humidity: 56.4%
 Test Distance: 26.000m [K=1.3952]
 Remarks:

Planar Illuminance Curve



C Range: 0 - 360DEG
C Interval: 22.5DEG
Test Speed: HIGH
Temperature: 24.5DEG
Operators: William
Test Date: 2020-04-27

γ Range: 0 - 180DEG
 γ Interval: 1.0DEG
Test System: EVERFINE GO-R5000_V2 SYSTEM V2.0.366
Humidity: 56.4%
Test Distance: 26.000m [K=1.3952]
Remarks:

LUMINOUS DISTRIBUTION INTENSITY DATA

Test:U:0V I:0A P:0W PF:0.0000 Freq:0Hz Lamp Flux:618.278x1 lm																		
NAME: NYX Bulb										TYPE:LED					WEIGHT:N/A			
SPEC.:N/A										DIM.:					SERIAL No.:N/A			
MFR.: Astera LED Technology GmbH										SUR.:					Shielding Angle:N/A			

Table--1

UNIT: cd

C(DEG) γ (DEG)	0	22.5	45	67.5	90	112.5	135	157.5	180	202.5	225	247.5	270	292.5	315	337.5			
0	114	114	114	114	114	114	114	114	114	114	114	114	114	114	114	114			
5	114	114	114	114	115	115	115	115	114	114	114	114	114	113	113	113			
10	112	112	113	114	115	115	116	116	114	114	114	114	113	112	112	111			
15	110	110	111	113	114	115	116	116	114	114	113	113	112	111	110	110			
20	108	108	109	111	113	114	115	116	113	113	113	112	111	109	108	107			
25	105	105	107	108	110	112	113	114	112	112	111	110	108	107	105	104			
30	101	102	103	105	107	109	111	112	109	109	108	107	105	103	102	101			
35	97.3	98.4	99.8	102	104	106	107	108	106	106	105	104	102	100	98.4	97.5			
40	93.2	94.3	95.7	97.7	99.9	102	103	105	103	103	102	101	98.4	96.3	94.5	93.7			
45	88.8	89.8	91.3	93.3	95.4	97.2	98.9	99.9	98.5	98.3	97.8	96.4	94.3	92.1	90.3	89.4			
50	84.3	85.2	86.6	88.6	90.5	92.3	93.8	94.9	93.8	93.8	93.2	91.8	89.8	87.5	85.7	84.9			
55	79.5	80.4	81.8	83.4	85.4	87.0	88.4	89.4	88.5	88.5	88.1	86.7	84.6	82.5	80.7	80.0			
60	74.7	75.6	76.8	78.4	80.1	81.5	82.6	83.6	82.6	82.7	82.4	81.2	79.3	77.6	75.7	74.9			
65	69.6	70.5	71.6	73.0	74.6	75.8	76.8	77.6	76.4	76.7	76.6	75.4	73.8	72.4	70.5	69.8			
70	64.5	65.3	66.3	67.5	68.8	69.8	70.7	71.4	70.1	70.4	70.5	69.6	68.3	66.7	65.2	64.5			
75	59.5	60.2	61.2	62.1	63.2	63.9	64.6	65.1	63.9	64.3	64.7	63.9	62.7	61.7	60.1	59.5			
80	54.5	55.1	56.0	56.8	57.7	58.2	58.6	59.0	58.0	58.4	58.8	58.4	57.5	56.4	55.0	54.6			
85	49.6	50.2	50.9	51.6	52.3	52.7	52.8	53.1	52.3	52.9	53.0	52.8	52.1	51.2	50.0	49.6			
90	44.8	45.4	45.9	46.5	47.0	47.3	47.3	47.5	46.7	47.1	47.4	47.5	46.9	46.2	45.1	44.9			
95	40.3	40.8	41.2	41.7	42.1	42.2	42.2	42.2	41.5	42.0	42.4	42.5	42.0	41.4	40.6	40.3			
100	36.0	36.5	36.8	37.1	37.3	37.3	37.3	37.3	36.6	37.0	37.6	37.4	37.2	36.4	36.2	36.0			
105	32.0	32.4	32.6	32.6	32.6	32.6	32.6	32.6	32.5	32.7	32.7	32.7	32.7	32.7	32.7	32.7			
110	28.2	28.5	28.9	28.9	28.9	28.9	28.9	28.9	28.5	27.9	28.1	1.49	28.9	28.7	28.6	5.39	27.8		
115	16.1	5.79	15.1	25.2	25.2	25.2	17.0	3.38	15.8	3.73	18.1	25.1	25.0	24.8	17.6	7.33			
120	0.22	4.19	21.6	21.8	21.8	21.8	21.5	6.87	0.39	7.14	21.3	21.7	21.3	21.5	21.1	5.43			
125	15.3	14.6	18.4	18.5	18.6	18.5	18.3	13.1	14.1	15.6	18.1	18.3	7.42	18.3	17.9	12.7			
130	13.6	8.84	15.5	15.6	3.01	15.6	15.4	7.49	12.0	10.0	15.4	15.3	2.18	15.4	15.3	6.86			
135	11.3	4.27	13.0	12.7	6.07	12.6	12.8	3.56	10.0	5.28	12.6	11.7	5.04	9.51	12.4	2.66			
140	9.02	1.12	9.95	5.89	5.19	5.75	9.80	1.20	8.28	1.62	9.85	5.09	4.37	5.79	9.48	0.29			
145	6.97	0.66	6.78	1.70	0.22	1.89	6.62	0.96	6.37	1.03	6.53	1.55	0.73	0.72	6.51	0.07			
150	4.10	0.74	3.84	4.51	2.96	4.83	3.72	1.19	4.76	1.62	2.93	1.71	3.63	4.83	3.84	0.07			
155	3.46	1.10	0.31	4.01	2.22	4.02	0.46	1.19	3.44	1.62	0.15	2.22	2.53	2.69	0.60	0.00			
160	1.98	1.17	0.00	1.06	0.61	1.27	0.00	1.33	2.35	1.61	0.07	0.00	1.17	1.63	0.00	0.00			
165	0.07	0.00	0.00	0.00	0.00	0.00	0.00	0.00	0.00	0.00	0.07	0.00	0.00	0.00	0.00	0.00			
170	0.15	0.00	0.00	0.00	0.00	0.00	0.00	0.37	0.44	0.44	0.00	0.00	0.00	0.00	0.00	0.00			
175	0.07	0.00	0.00	0.00	0.00	0.00	0.00	0.00	0.00	0.00	0.00	0.00	0.00	0.00	0.00	0.00			
180	0.00	0.00	0.00	0.00	0.00	0.00	0.00	0.00	0.00	0.00	0.00	0.00	0.00	0.00	0.00	0.00			

C Range: 0 - 360DEG
C Interval: 22.5DEG
Test Speed: HIGH
Temperature:24.5DEG
Operators:William
Test Date:2020-04-27

γ Range: 0 - 180DEG
γ Interval: 1.0DEG
Test System:EVERFINE GO-R5000_V2 SYSTEM V2.0.366
Humidity:56.4%
Test Distance:26.000m [K=1.3952]
Remarks: